

062647

E 1/4 Cor Sec 3 T17N R67W
CERTIFIED LAND CORNER RECORDATION

RECEIVED
LARAMIE COUNTY
CHEYENNE, WY.

OCT 5 PM 3 01

DESCRIPTION OF CORNER EVIDENCE FOUND, AND ORIGINAL RECORD (if known)

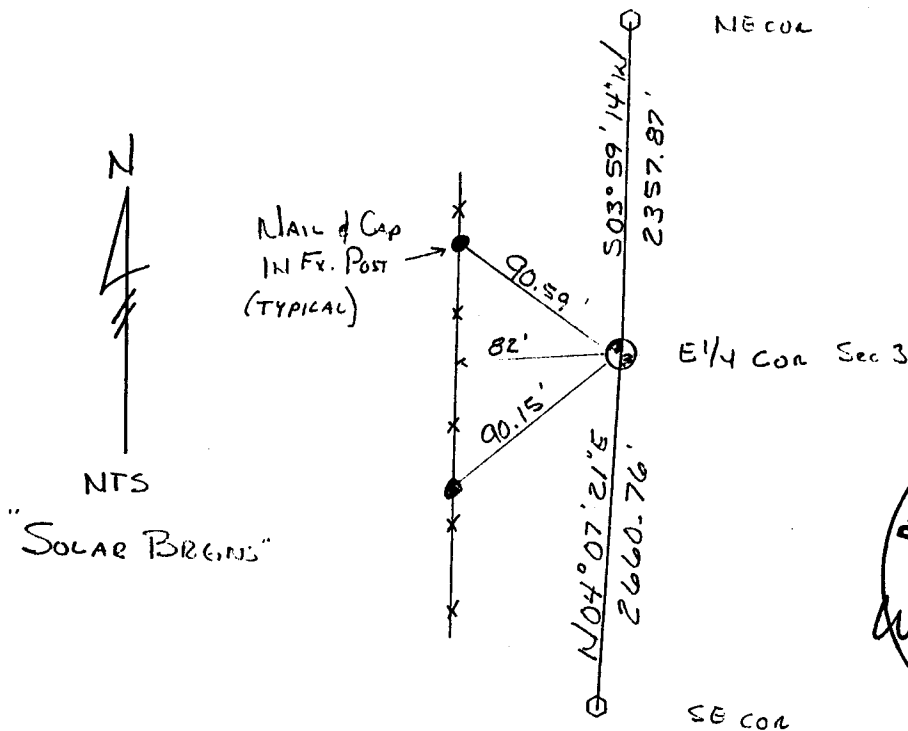
FOUND THE ORIGINAL STONES LYING FLAT, w/ 1/4 CHISELED ON UPPER FACE. ACCEPTED THE CORNER, DISTANCES COMPARED WITH OTHER DISTANCES MEASURED IN THE AREA ARE ACCEPTABLE.

DESCRIPTION OF MONUMENT AND ACCESSORIES ESTABLISHED TO PERPETUATE THE ORIGINAL LOCATION OF THIS CORNER:

I REPLACED THE STONE WITH A 30" X 5/8" REBAR w/ A CORNER OF ENGINEERS BRASS CAP, SET FLUSH WITH GROUND. PLACED THE STONE ALONG SIDE AND RAISE A MOUND OF STONE. TIED TO EXISTING FENCE AS SHOWN BELOW.

JUN 21 1989

SKETCH, WITH COURSE AND DISTANCE TO ADJACENT CORNER IF DETERMINED IN THIS SURVEY. (May Sketch or Paste Reproduction on Reverse Side.)



I, Wallace C. Muscott certify that I have carefully performed or reviewed the work done on the diagrammed corner as reported on this recordation form and approve the same.

Wallace C. Muscott
Signature of Surveyor

3830
Registration No.

STATE OF WYOMING,
Office of Clerk and Recorder,
County of _____

This "corner record" was filed for record on the _____ day of _____, 19____, was noted on the cross-index plat and is assigned page No. _____, in book No. _____.

County Official		
Cross Index No. <u>C-17</u>	T. <u>17N</u>	R. <u>67W 6E</u> Mer.
_____	T. _____	R. _____ Mer.
_____	T. _____	R. _____ Mer.
_____	T. _____	R. _____ Mer.
_____	T. _____	R. _____ Mer.
_____	T. _____	R. _____ Mer.
_____	T. _____	R. _____ Mer.